

Worldwide Internet Radio

Worldwide Internet TV

Worldwide Internet News (not applicable)

Worldwide Internet Games (not applicable)

Manual

© Copyright, All Rights Reserved.

No part of this manual may be reproduced in any form without the prior written permission.

Preface

Thank you for buying this product. This manual describes the settings and operations and lead you to quickly enjoy Internet media.

A. Product Highlight

- Embedded thousands of internet stations around the world with complete categorization of regions, genres and languages.
- Plug-and-play auto-run. Safe and easy to use.
- With My Favorite and History list, no missing to any good radio and TV stations.
- Recording favorite music or programs.
- Sharing good radio or TV stations and information by voting mechanism.
- The latest news by categories all over the world.
- My keyword for your convenience to search news
- The most popular keywords ranking
- News e-mail forwarding and clipping
- Read news and enjoy listening to music at the same time

B. System Requirements

CPU	500MHz or above
Display Resolution	1280 *1024 (standard), 1280 * 800(widescreen)

	recommended
Memory	512MB or above
HDD	free space 10MB or above
Network	Radio: approx. 99% Internet Radio stations played upon 0.2Mbps bandwidth TV: approx. 80% Internet TV stations played upon 0.4Mbps bandwidth.
Sound Card	Enabled
USB Port	USB 2.0
Operating System	Windows XP SP2 or above, Windows Vista, Windows 7
Browser	IE6 or above
Media Player	Version 9 or above

Launch

Please plug the dongle into the USB port of your computer. The program will be automatically launched. At the first time, you will be prompted to select the preferred language. If nothing comes up, please visit [FAQ](#) for solutions.



A. Function Menu



1. (Optional) Select Radio, TV, News or Game mode.
2. (Optional) Keyword search. Enter a string and press [Enter]. It will search the

<http://efo.buy-lowest.com>

station names which contains the string.

3. Display the top 100 stations for each genre, which was elected by all users.
4. Display the top 100 stations for each region, which was elected by all users.
5. (Optional) Display the top 10 stations for each language, which was elected by all users.
6. (Optional) Categorize stations by genre.
7. (Optional) Categorize stations by region.
8. (Optional) Categorize stations by language.
9. Display your favorite stations which were added to this list by “Add to Favorite” button. The newly added station will be appended to the bottom of this list.
10. The 20 stations you listened recently. The most recently played station will be listed at the top.
11. Contact Us - There are some options for you to deliver messages to us. Click on the item and fill out the fields, especially those marked with “*”.
 - I. Add Stations - You may suggest us some stations to add to the station list. Fill out the form and press [Submit], and then we will look for the station, add to the list and response to you. [Reset] button will clear all fields.
 - II. Update Station Information - If you find any wrong descriptions about a station, please let us know. Fill out the form and press [Submit], and then we will update the contents as soon as we get the message.
 - III. Question, Comment, or Suggestion - You may share any questions, comments, or suggestions with us here. Fill out the form and press [Submit]. Your every opinion is very valuable and appreciated!
12. Personal Settings.
 - I. Default Mode – Set up the default mode (Radio, TV, News or Game) to display and play.
 - II. Default Station – Plug and Play, together with the setting of Default Mode. Assign a station to be automatically played while launching. There are many

options for you to choose:

- None. Don't play any station automatically if you are afraid to bother your neighbors.
- Random. System will randomly pick one station from the radio station database for you to enjoy the surprise.
- The most popular station. The No.1 station in the [Top 100 – Genre] list.
- The No.1 in My Favorite List.
- The station which you played last time when exiting this system.
- Random from My Favorite. Randomly pick one station from your favorite station list.
- Specified below. Specify a station by entering a string and search for all matched station names. All matched stations will be displayed in the pull-down list for you to pick one from them.

III. Default Game – Plug and Play, together with the setting of Default Mode.

Assign a game to be automatically played while launching. There are many options for you to choose:

- None. Don't play any game automatically if you are afraid to bother your neighbors.
- Random. System will randomly pick one game for you to enjoy the surprise.
- The most popular game. The No.1 game in the [Top 100 – Genre] list.
- The No.1 in My Favorite List.
- The game which you played last time when exiting this system.
- Random from My Favorite. Randomly pick one game from your favorite game list.
- Specified below. Specify a game by entering a string and search for all matched game names. All matched games will be displayed in the

pull-down list for you to pick one from them.

IV. Default News – Plug and Read, together with the setting of Default Mode.

Assign a menu item to be automatically played while launching. There are many options for you to choose:

- News Today
- My News
- Hot Keyword News
- My Clips

V. Select language. Use the pull-down button to select your preferred language.

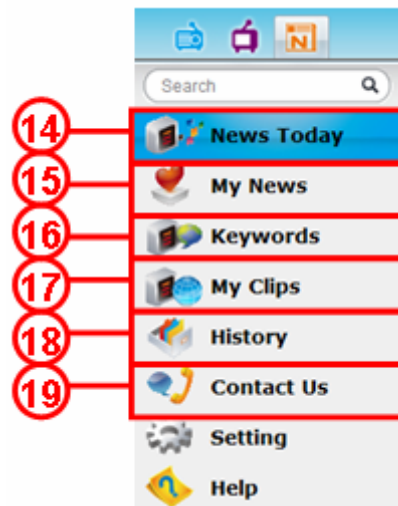
VI. Weather Forecast – two ways to choose the city:

- Auto detect: it will provide you the capital or a big city according to the computer IP whenever you plug in it.
- Manually setup: Use the pull-down button to select one city you are interested in. You can also use “search” function to find out a specific city.

VII. Region for News Today – three ways to choose the region:

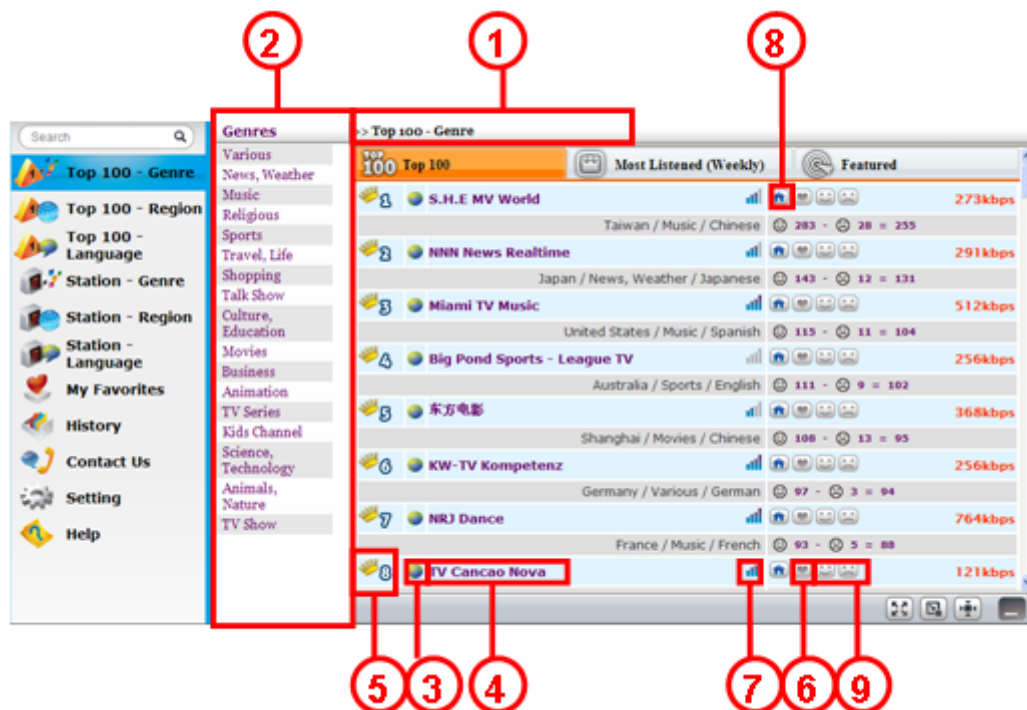
- Auto detect: it will provide you the region or the country according to the computer IP whenever you plug in it.
- Manually setup: Use the pull-down button to select one region you are interested in. You can also use “search” function to find out a specific region.
- Select All: It will provide you the latest 24-hour news all over the world.
- Click the [Save] button to save the settings and you can enjoy the music as you wish next time.

13. Refer to this document for operation instructions.







14. Providing the latest 24-hour news.
15. You can set 10 my keywords in my news.
16. Providing the top 30 hot keywords.
17. Your news clipping will be categorized.
18. Read news will be recorded and sorted by read time.
- I. Contact us - There are some options for you to deliver messages to us. Click on the item and fill out the fields, especially those marked with “*”.
 - I. Recommend News Source - You may suggest us some News Sources to add to the data base. Fill out the form and press [Submit], and then we will look for the news source, add to the data base and response to you. [Reset] button will clear all fields.
 - II. Question or Suggestion - You may share any questions, comments, or suggestions with us here. Fill out the form and press [Submit]. Your every opinion is very valuable and appreciated!

B. Top 100 Station List

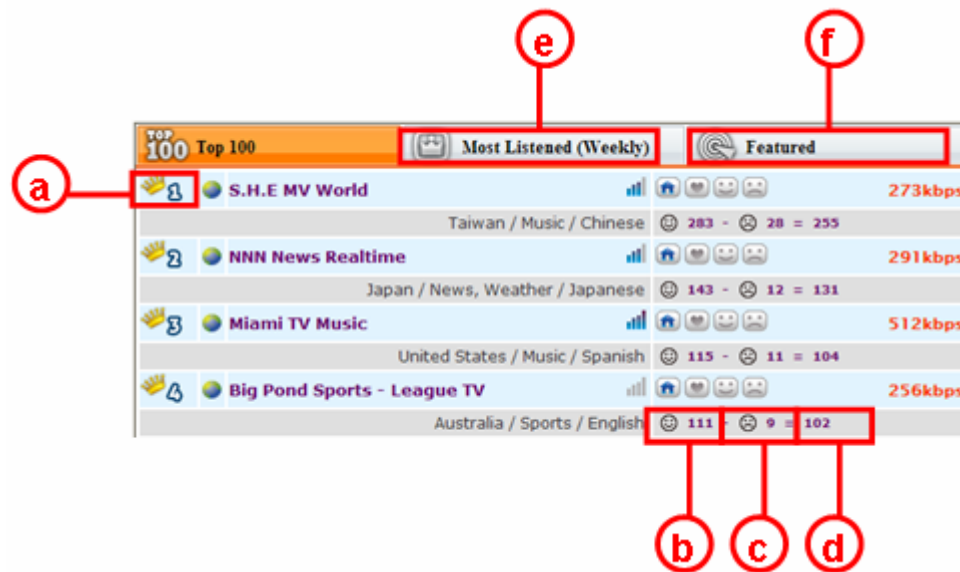


1. Path of the present position. Click along the path to track back.
2. Select the Genre, Region or Language to see the Top 100 in the category.
3. Represent the station being able to be played directly in the user interface.
4. Radio Station name. You may also click on the name to tune in this station.
5. Radio Station ranking
6. Press the mark to add the station to My Favorite. A red-heart mark means it has been added to My Favorite list.
7. The most recently successful connection rate. The better signal it displays, the higher possibility to connect successfully.
8. Home. Click to open the website of the station in another window.
9. Vote :

Click  button in the pane of the station to recommend, and the button will turn to a solid smiling face . The votes of this station will increase.

Click  button in the pane of the station to discommend, and the button will turn to a solid frowning face . The votes of this station will decrease.

The voting will change immediately and refresh the ranking.



- The ranking from 1 to 100.
- The number of recommending votes. This number will increase when you click the 😊 button.
- The number of discommending votes. This number will increase when you click the ☹ button.
- The net voting, which equals the recommending votes minus the discommending votes. The ranking is ordered by this number.
- Most Listened. Indicate the radio stations which are the most frequently listened in one week.
- Featured. Indicate the radio stations which have features and are recommended.



10. There are 10 my keywords which can be set by yourself.
11. Those keywords Path of the present position.
12. News can be sorted by correlative or date.
13. News title
14. Display how many news found and how much time taken totally. One page gives 20 news.
15. News source and post date.

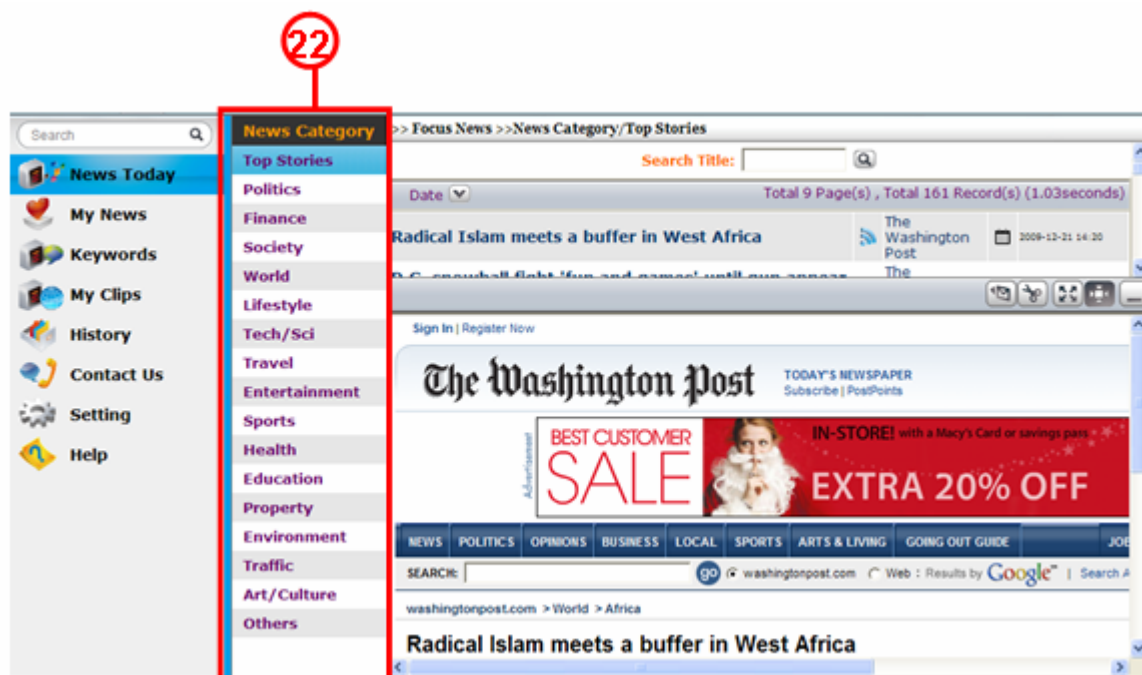


http://efo.buy-lowest.com

16. Collected news clippings are listed by keyword
17. Collected news clippings are listed by date.
18. You can use keyword to search news title in your news clippings.
19. Display available space in the dongle.
20. Display numbers of the news clippings.

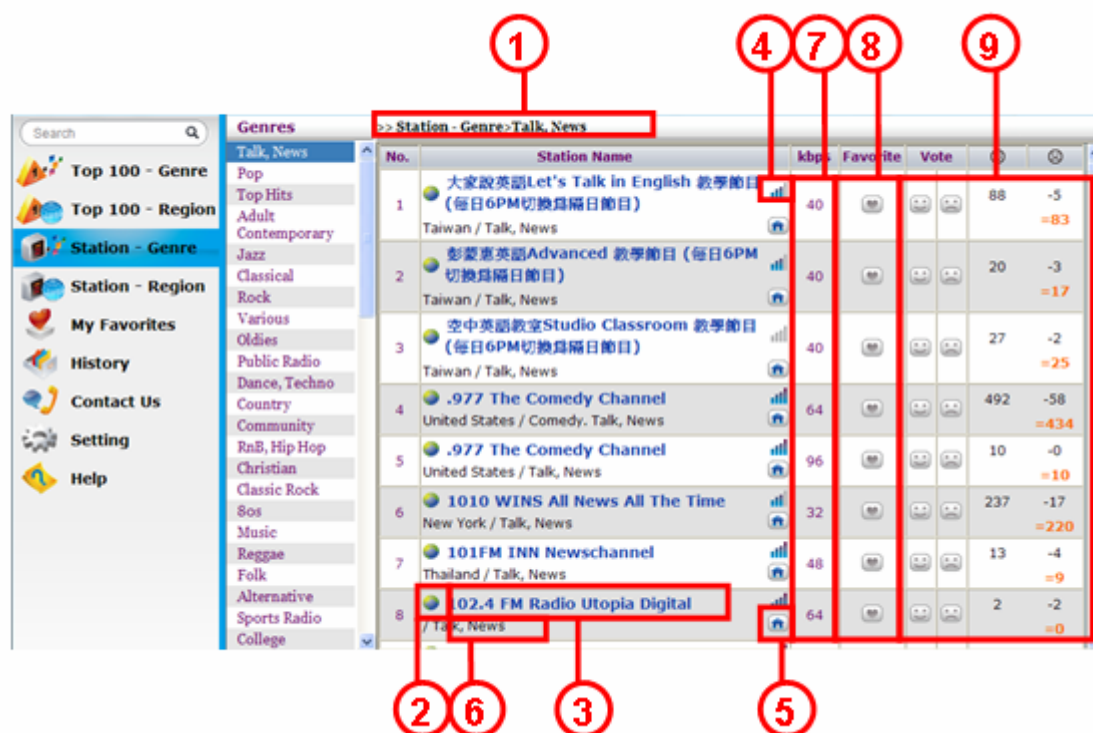


21. Giving the top 30 keywords using as my keywords in My News.



22. The latest 24-hour news are categorized by 17 items.



C. Internet Radio Station List



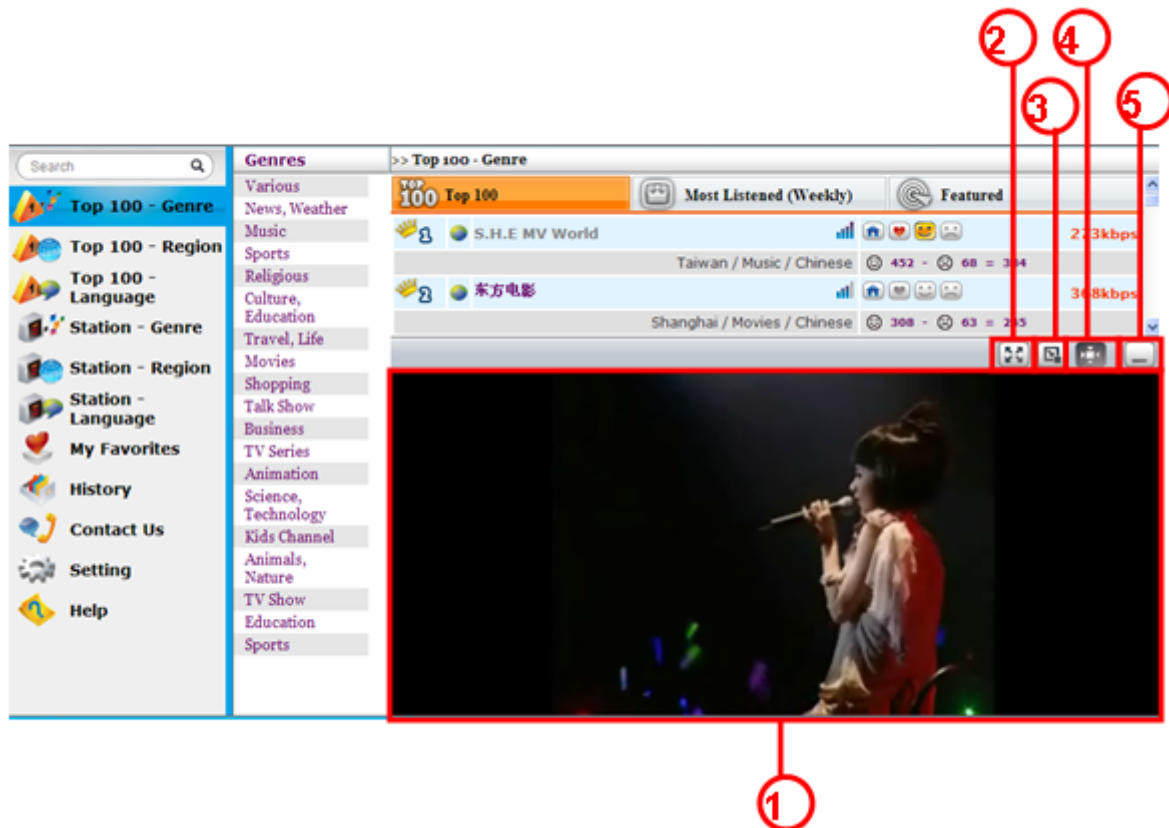
1. Path of the present position. Click along the path to track back.
2. Represent the station being able to be played directly in the user interface.
3. Radio Station Name. You may also click on the name to tune in this station.
4. The most recently successful connection rate. The better signal it displays, the higher possibility to connect successfully.
5. Click to open the website of the station in a new window.
6. Country/Genre. In the station list categorized by genre, this column will display the country which this station locates. In the station list categorized by region, this column will display the genre of this station's music.
7. Transmission bitrate
8. Press the mark to add the station to My Favorite. A red-heart mark means it has been added to My Favorite list.

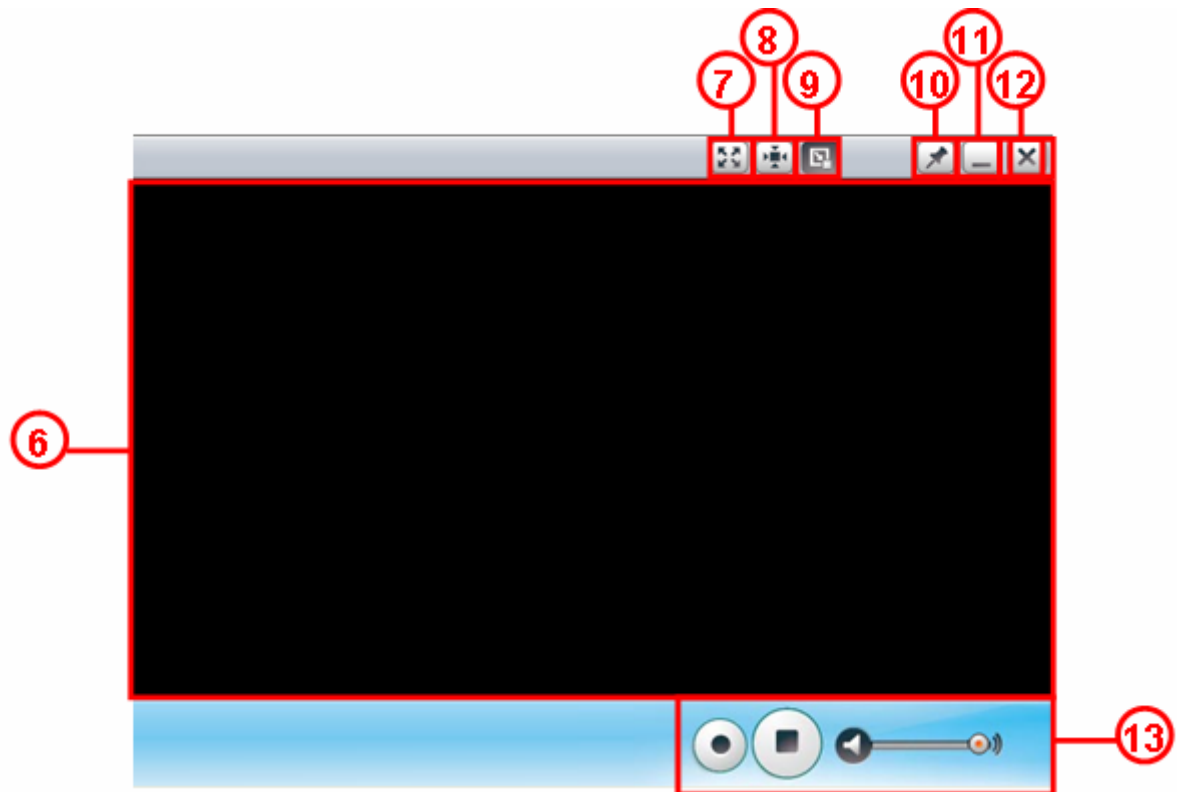
Click button in the pane of the station to recommend, and the button will turn to a solid smiling face . The votes of this station will increase.

<http://efo.buy-lowest.com>

Click  button in the pane of the station to discommend, and the button will turn to a solid frowning face . The votes of this station will decrease. The voting result from users all over the world will affect the ranking in the “[Top 100](#)” list.

D. TV/News Window





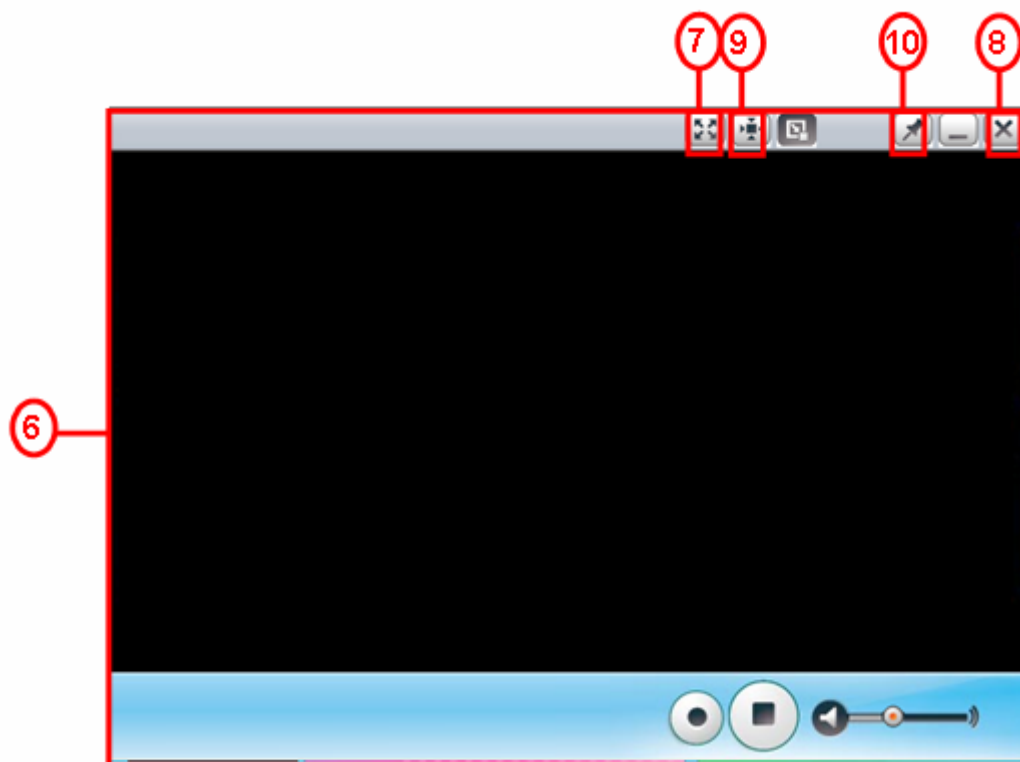
1. TV window
2. TV window can be maximized.
3. A pop-up TV window can be opened.
4. Display TV window in normal size.
5. TV window can be minimized.
6. Pop-up TV window
7. TV window can be maximized.
8. Close pop-up TV window and go back to TV window in embedded mode.
9. Display TV window in pop-up mode.
10. Keep pop-up TV window always on the top of the screen.
11. Pop-up TV window can be minimized.
12. Close pop-up TV window
13. Recording, Stop, Mute and Volume control



14. News window
15. News e-mail forwarding
16. News clipping
17. News window can be maximized.
18. Display News window in normal size.
19. News window can be minimized.

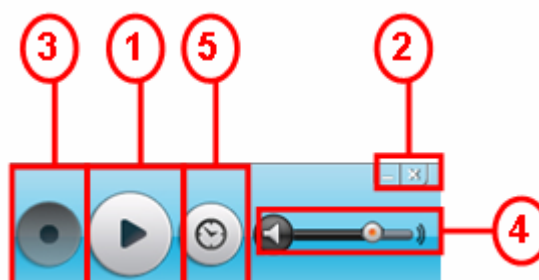
E. Display Area





1. Display station name which is playing
2. Deliver copyright and system announcement
3. Status of your operation on the station: Play or Record
4. Time of Play or Record
5. My favorite pre-set keys
6. TV screen
7. Maximize: maximize you viewing screen.
8. Close: turn off current TV stream.
9. Normal: normal viewing mode
10. Always on top: make your pop-up window always on top of all other windows.


F. Controlling Area



1. Play  / Stop 

<http://efo.buy-lowest.com>

Click the **Play** button  to play the radio and click the **Stop** button  to stop.

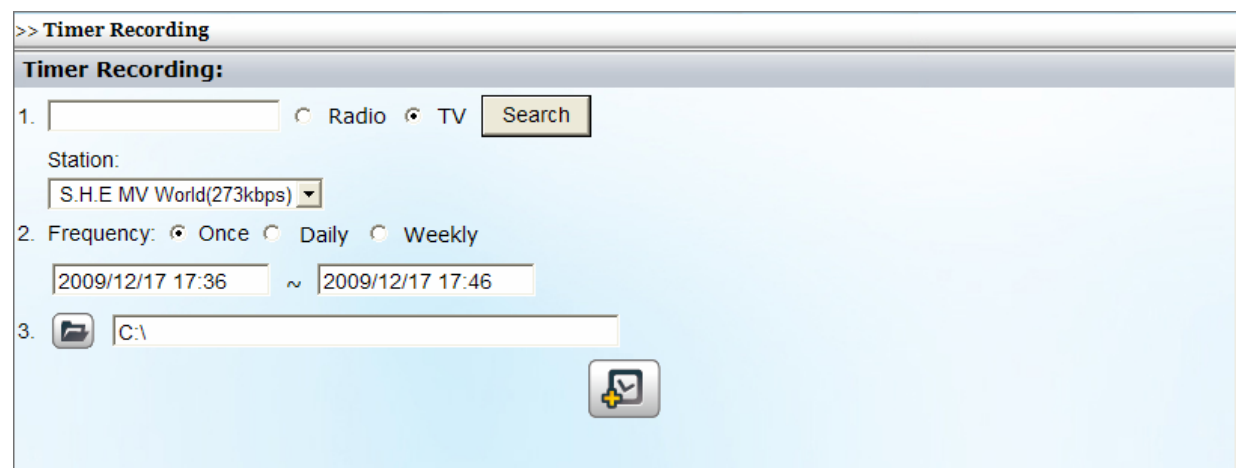
2. Minimize  / Finish the program 

3. (Optional) Record  / Stop recording 

Click the **Recording** button to record the currently played radio station. You will be prompted to select the path and filename for the recorded file. Click the Stop Recording button to stop. Switching to play another station will also cause the recording process to stop.

4. Click  to mute and  to adjust volume

5. (Optional) Timer Recording



Search for the station and select one from the list.

Choose when to start recording and the frequency (Daily or Once).

Select the folder to save the recorded file.

Then click the Down Arrow, your setting will be listed as a to-do task.

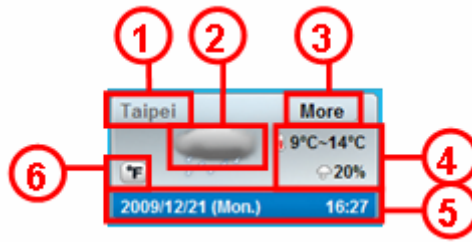
It will start recording at the time you specified.

Later on when you come back, the results are displayed at the bottom of the same page.

Note: Because (1) network transmission might not be fast enough and (2) playing, encoding and writing at the same time consume a lot of computer resources, it is possible that playback becomes skipping or recorded file becomes not complete.

G. Weather Forecast

<http://efo.buy-lowest.com>



1. City or region
2. Weather condition
3. More weather forecast in the future
4. Temperature and precipitation chance
5. Date, week and time of the city or region
6. Celsius/Fahrenheit switch

H. Games

1. Game Switch



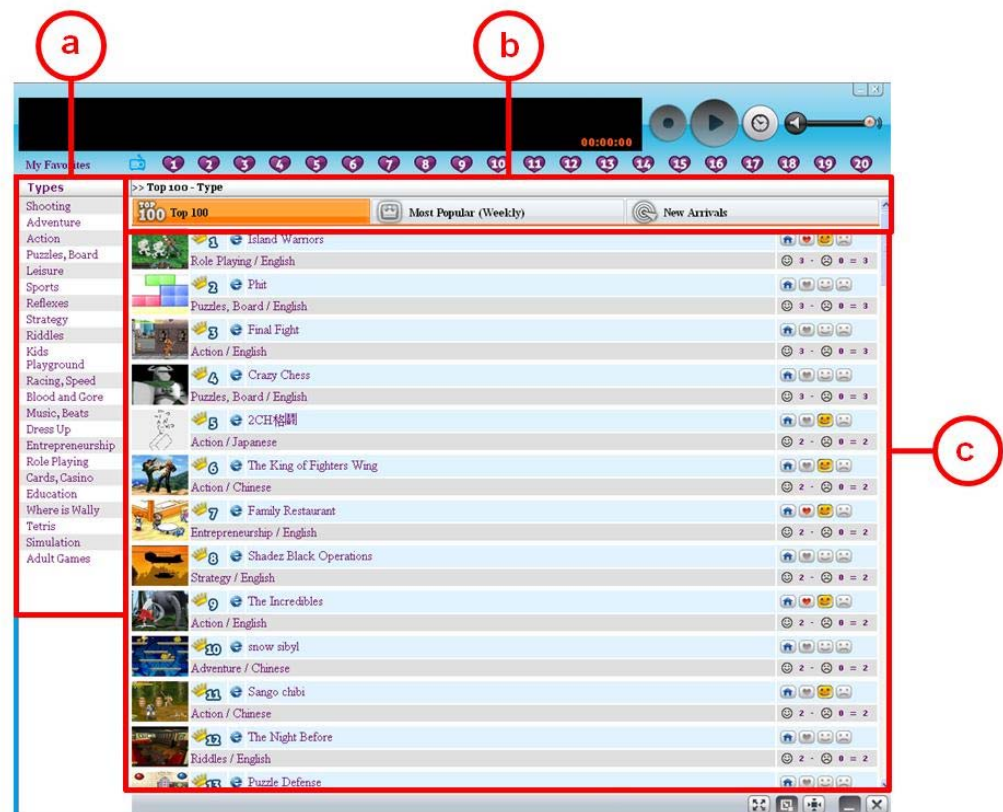
Clicking on the joystick icon will lead you to the game menu.

2. Game Main Menu



- I. Service Switch: Radio, TV, New, Games (Service combination varies with each product version.)
- II. Search: Allow you to search for desired games with keywords.
- III. Top 100 – Type
- IV. Top 100 – Language
- V. Game – Type
- VI. Game – Language

3. Top 100 - Type



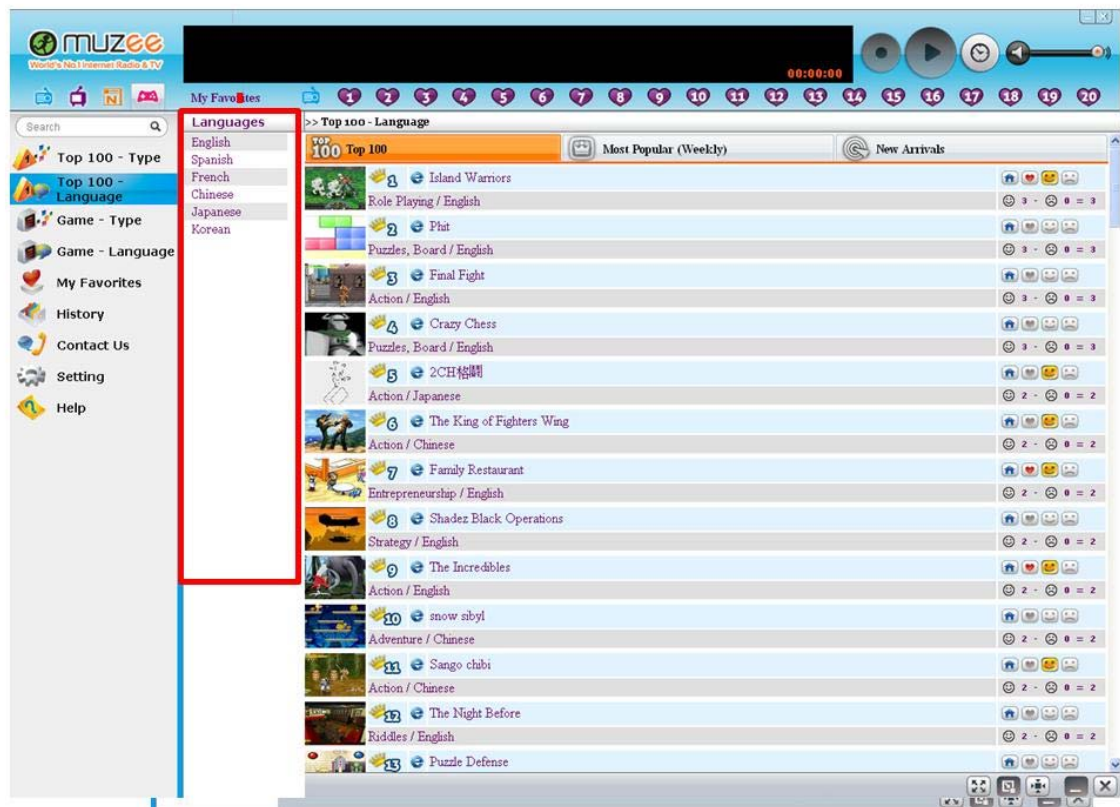
Produce a list (c) of 100 games ranked from the most voted game to the least voted game. List can be filter or specified according a chosen game type. When this item is selected, the sub menu (a) will produce a list of game types.

- I. Game type: Choose the specific game from a list of different game types.
- II. Section C can let you select the conditions for your rank list.
 - Top 100: List will be ranked according to the number of votes each game's aquied.
 - Most popular: List will be ranked according the number of clicks (popularity) each game's aquied.
 - New Arrivals: List will be ranked according to the date that each game's added on. Newer the date, higher the rank.

III. Game list : To open the games, please click on the game titles or the game thumbnails.

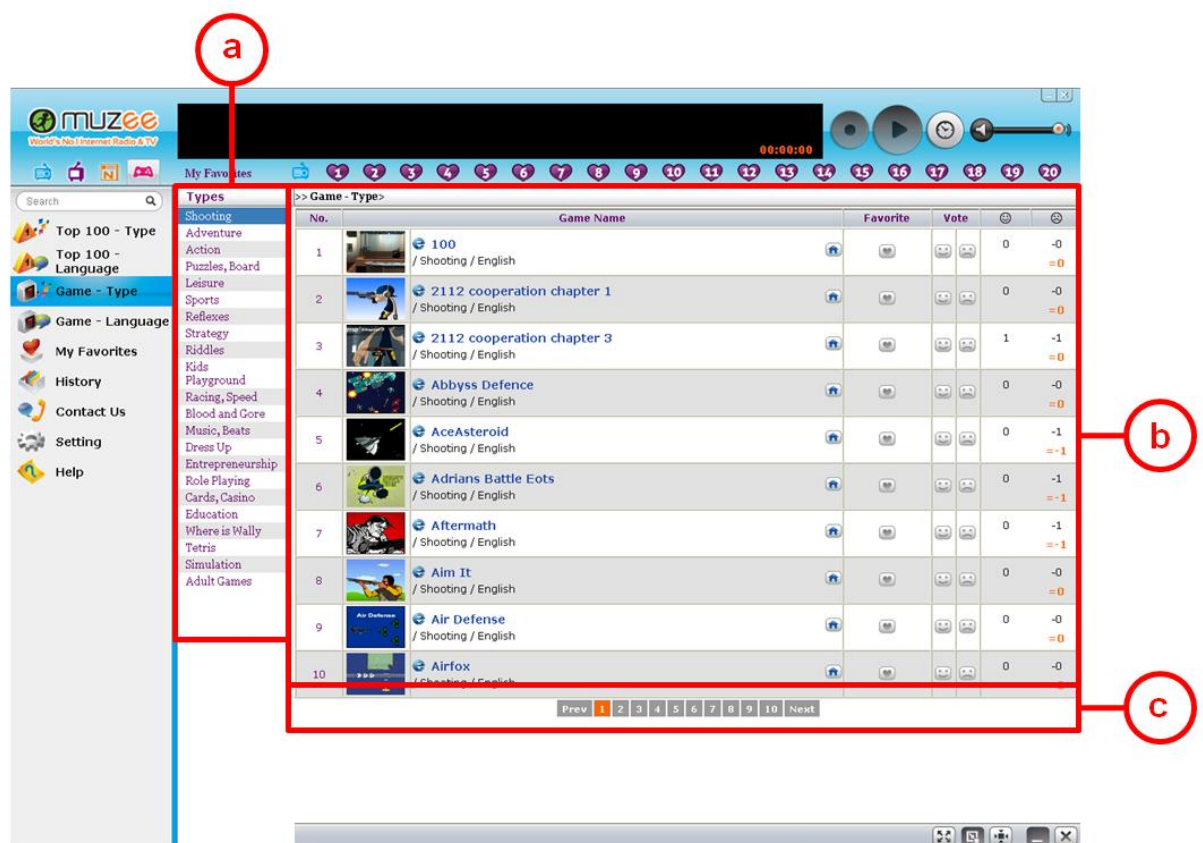
4. Top100 - Language

<http://efo.buy-lowest.com>



Produce a list of 100 games ranked from the most voted game to the least voted game in the database. List can be filter or specified according a chosen language. When this item is selected, the sub menu will produce a list of languages.

5. Game list - Type

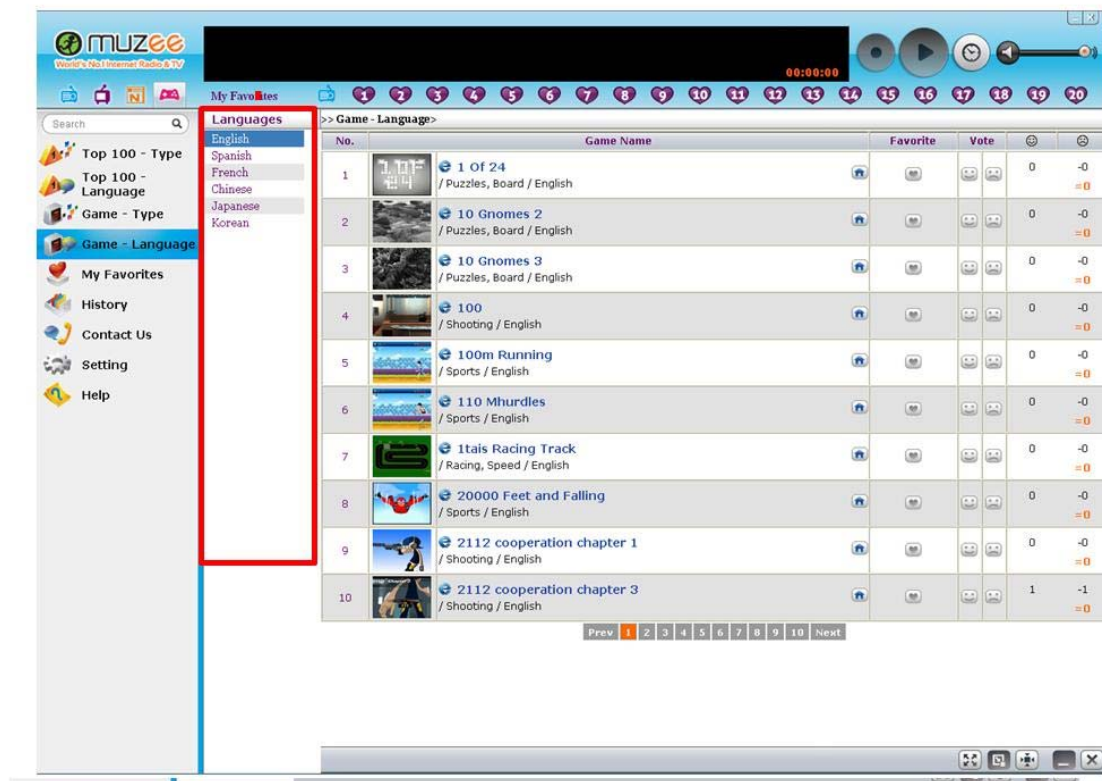


Produce a list (B) of all games in the database. List can be filter or specified according a chosen game type. All games are arranged alphabetically. The game list is enhanced with a paging system (C), in which 10 games are shown per page.

- I. Game type: Choose a specific type of game you wish to play from a list of 24 game types.
- II. Game list: Please click on either the game titles or the game thumbnails to start the game.
- III. Paging system: Each page contains a list of ten games.

6. Game list - Language

<http://efo.buy-lowest.com>



Language list: Choose a specific language you want for your games.

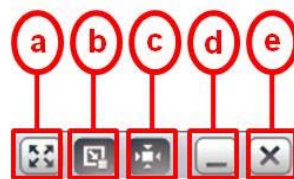
8. Playing the game

<http://efo.buy-lowest.com>



- I. Radio Status: Play games and listen to your favorite music at the same time.
- II. Toolbar: Please see Section O for more details.
- III. Screenshot: Change your game screen size with the toolbar.

9. Toolbar



- I. Maximize: Play games with full screen mode.
- II. Popup: Not supported
- III. Normal: Resume normal window size
- IV. Minimize: Minimize your game screen and view the full game list.
- V. Close: This button will turn off all games and minimize your game screen.

Frequently Asked Questions

Product Terms:

1. [What are Internet Radio and TV?](#)
2. [What is Kbps?](#)

Installation and Limitation:

3. [Does the software need to be installed?](#)
4. [Does it have any restriction on software and hardware?](#)
5. [The security warning will pop out at the first time to ask whether to download the ActiveX Control - VBIRDPlayer.CAB. Will it be safe to download it?](#)

Playback Issues:

6. [Why can't it start automatically after plugging dongle into the USB port?](#)
7. [Why does it fail to connect to all stations?](#)
8. [Why does it fail to connect to some stations?](#)
9. [Why is there some noise and broken sound during playing?](#)
10. [Can I tune in any station after unplugging the dongle?](#)

Stations:

11. [Why do some stations disappear suddenly?](#)
12. [Can I offer the internet radio/TV stations to the station list?](#)
13. [Will it update and get new stations regularly?](#)

1. Q: What are Internet Radio and TV?

A: Internet Radio/TV means that radio/TV stations distribute signal through Internet. As long as the computer connects to Internet, you will be able to listen to the radio/TV without any area limitation. You can enjoy the whole world music and TV programs from anywhere.

[Back to FAQ](#)

2. Q: What is Kbps?

A: Kbps means numbers of kilobytes which transferred per second. The bigger the number it shows the more data it transfers in one second. It means that

acoustics will be better but also takes more bandwidth and more time to wait.
When it shows "--", it means we don't have the information so far.

[Back to FAQ](#)

3. Q: Does the software need to be installed?

A: No installation is needed, but downloading an ActiveX control file at the first time, or when we update it, is required. You only need to plug the dongle into the USB port and click [OK] when the player pops out automatically; then it will take few seconds to complete download. After that, you won't need to download the file any more.

[Back to FAQ](#)

4. Q: Does it have any restriction on software and hardware?

A: Please refer to [System Requirements](#).

[Back to FAQ](#)

5. Q: The security warning will pop out at the first time to ask whether to download the ActiveX Control - VBIRDPlayer.CAB. Will it be safe to download?

A : VBIRDPlayer.CAB is necessary for playing and recording. Please click [OK] to download the ActiveX Control file - VBIRDPlayer.CAB and be relieved to enjoy.

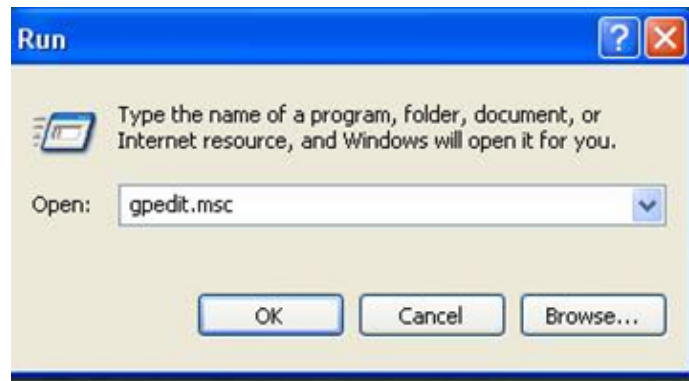
[Back to FAQ](#)

6. Q: Why can't it start automatically after plugging dongle into the USB port?

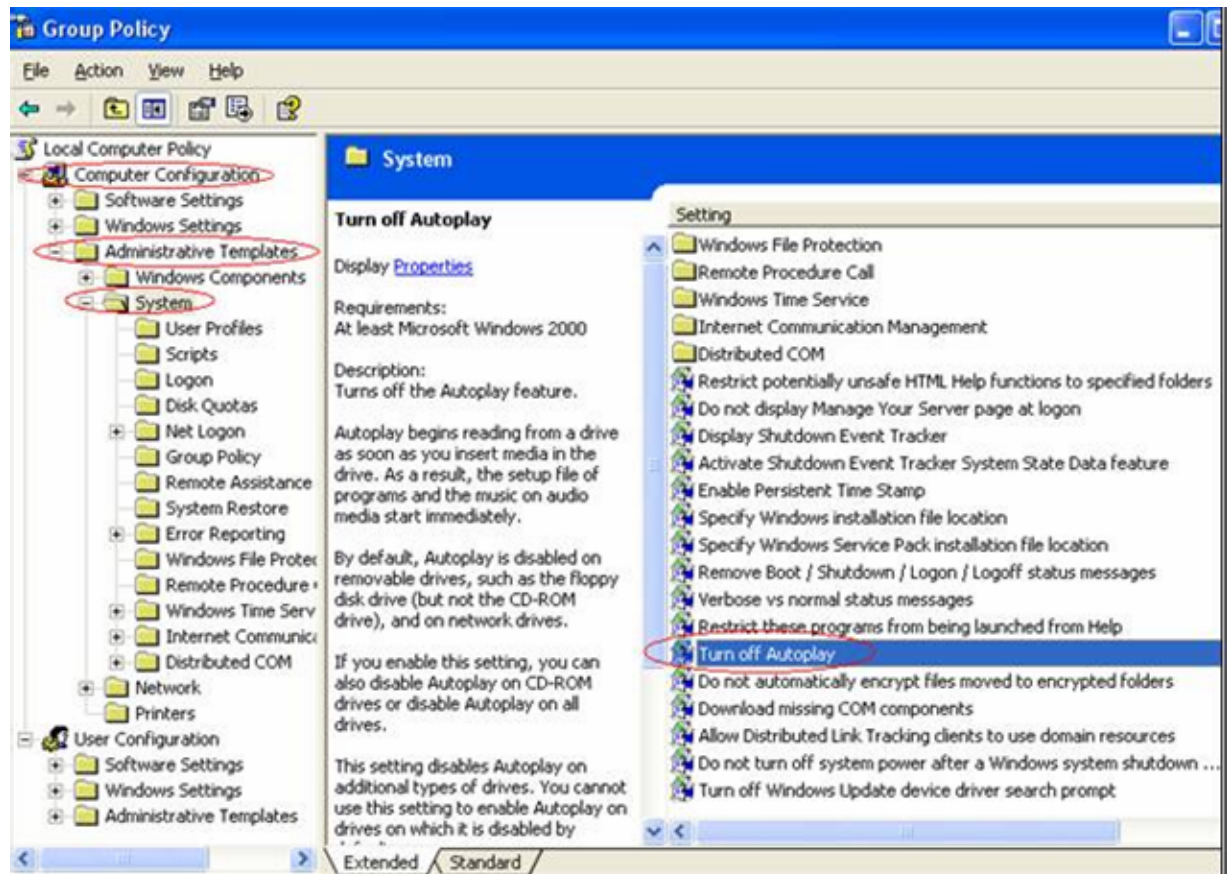
A: Settings of each computer will depend on version, language, and user's preferences. It will only provide service on computers with general settings. So if the program cannot start automatically, please check the follow settings.

- (1) Please confirm the setting whether [Autoplay] service has been enabled.
(Notice! Only XP Professional version can change Autoplay settings, please ignore this item if you are using XP Home version.) To enable, follow the steps:

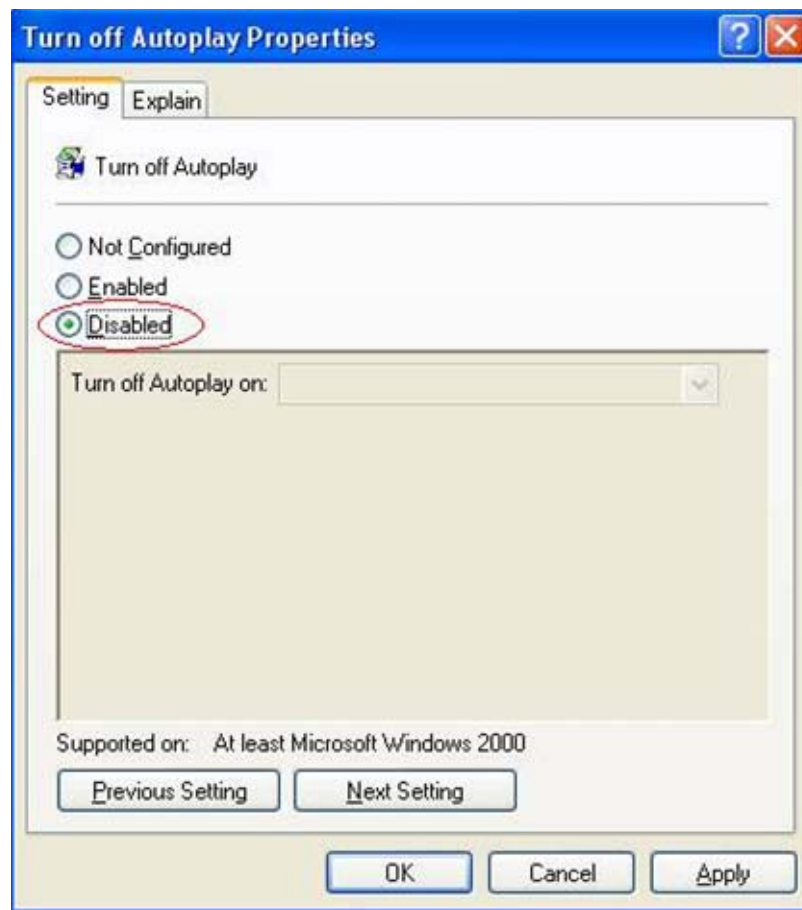
- i. [Start] → [Run] → Open: gpedit.msc



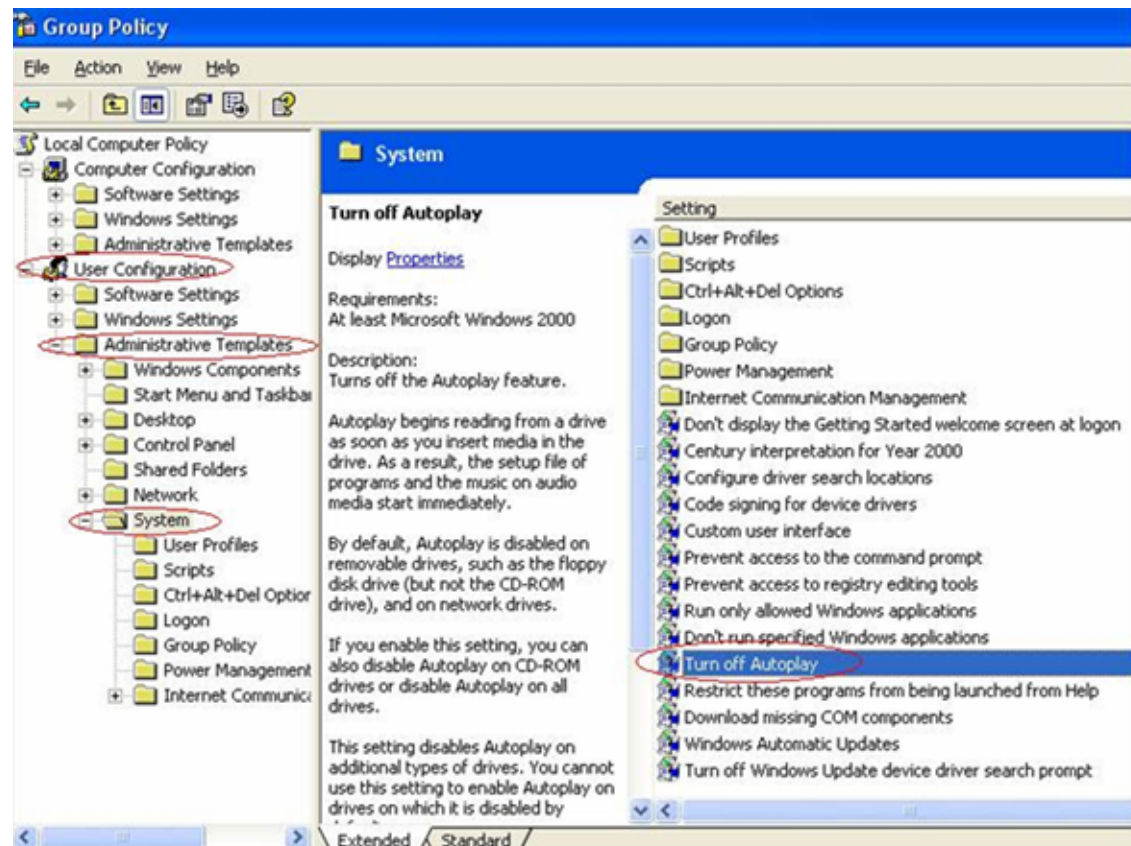
- ii. Select [Computer Configuration] from left side of the window
- iii. Expand folder and select [Administrative Templates]
- iv. Expand folder and select [System]. Then select [Turn off Autoplay] from right side of the window



- v. Double click to change the setting to [Disabled]



Repeat from step<ii>, select [User Configuration] and continue step<iii> ~ <v>.



If you don't want to change this setting, you may launch the program by double clicking the CD label which can be found on the disk list shown in [My Computer]

- (2) If you plug it into a PC with Windows Vista OS, because of its security control for every software and hardware, the following windows will be prompted to ask your permission to execute. Please click "Run IRDApp.exe". If you don't want this window to jump out next time, please also check the "Always do this for software and games" box.



- (3) Sometimes because of the over-loading or Operating System issue, your computer can't recognize the dongle has been plugged in. Please remove the dongle and plug-in again. Or you may double click on the CD-ROM disk (labeled with the product name) from [My computer] to launch the program.
- (4) If you plug-in the dongle before starting your computer, the Operating System won't autorun the program. Please remove the dongle and plug-in again. Or you may double click on the CD-ROM disk (labeled with the product name) from [My computer] to launch the program.

[Back to FAQ](#)

7. Q: Why does it fail to connect to all stations?

A: This is probably due to the download failure of the ActiveX file. Please check the following items:

- (1) Please make sure the product is legal.
- (2) Please make sure that computer has been connected to internet, and the Windows Media Player version is 9 series or above.
- (3) Please confirm your privilege to this computer is equal to Administrator.
- (4) Please check the following items in [Internet Explorer] → [Tools] → [Internet options] → [Security] → [Custom level] are Enable or Prompt:
 - Download signed ActiveX controls
 - Run ActiveX controls and plug-ins
 - Script ActiveX controls marked safe for scripting
 - Allow previously unused ActiveX controls to run without prompt (for

Vista only)

- (5) In Internet Explorer, on the **Tools** menu, click **Internet Options**, click the **Connections** tab, click the **LAN Settings** button, and then clear the **Automatically detect settings** check box and do not set any proxy server.
- (6) If above methods all fail, please follow the direction on the screen to download the file manually and install it.

If none of the above methods can solve the problem, please confirm whether your PC, the company or the Internet Service Provider has setup the firewall or Anti-Virus software to prevent streaming signal transmitting.

[Back to FAQ](#)

8. Q: Why does it fail to connect to some stations?

- A: (1) Internet radio stations are usually nonprofit and low capital so they may take break sometimes or the bandwidth they provide is insufficient for too many people to connect in the same time. No need of numerous equipments is the characteristic of internet radio station so that the stations won't need to invest a lot of money. Therefore most of them are nothing more than hosted by home office or students. So the connecting problem may occur sometimes. In order to avoid this problem, we also check the stations regularly to try to shift those suspended station out from the database.
- (2) Some ports might be blocked by the firewall. Many companies have the network policy to restrict connections.

[Back to FAQ](#)

9. Q: Why is there some noise and broken sound during playing?

- A: This is a portal of internet radio/TV to let users connect to the stations to get the streaming. Therefore, [Broken sound] might happen when bandwidth is insufficient or internetworking is congested. In this case, we suggest you choosing the stations with lower bit-rate (kbps), or adjust the buffer size of Window Media Player.

In the Windows Media Player, click the **Tools** Menu, select the **Options** choice, select the **Performance** tab, select the **Buffer** radio button, **type a new value** in the buffer text box from 1 - 60, for example 10, click the **Apply** and **OK** button. You're done.

You may need to do this more than once. Try increasing the buffer size in small increments until you find one that best balances performance and buffer times.

Noise could be caused by unstable sound quality provided by the station.

[Back to FAQ](#)

10. Q: Can I tune in any station after unplugging the dongle?

A: The program will be shut down automatically after unplugging the dongle, so you won't be able to enjoy it any more. If you unplug it incautiously, please plug the dongle again and select History to get the station List which was just played. Click on the station to play. If you don't want to remove/plug it every time, and have it always plugged, you can create a shortcut for it. Find the **.exe** file on the drive associated with the dongle, right click on it, and select **[Send To] -> [Desktop(Create shortcut)]**. Then you will see an icon on the desktop. Double click on the shortcut can activate it.

[Back to FAQ](#)

11. Q: Why do some stations disappear suddenly?

A: To ensure all stations we provided are connectable, we will keep detecting all stations' connection status. Once a station was detected as unreachable, we will remove it from all station lists, which include My Favorites and Top100 station lists.

[Back to FAQ](#)

12. Q: Can I offer the internet radio/TV stations to the station list?

A: Yes, you can do this by [Contact Us] -> [Add Stations] function from the menu at the left side. Please submit the station information like name, website, country and genre. We will process the information as soon as possible.

[Back to FAQ](#)

13. Q: Will it update and get new radio/TV stations regularly?

A: Yes! we will keep searching and updating new stations to the database. You will get the most up-to-dated station list every time you plug in the dongle.

[Back to FAQ](#)

[Back to Top](#)